

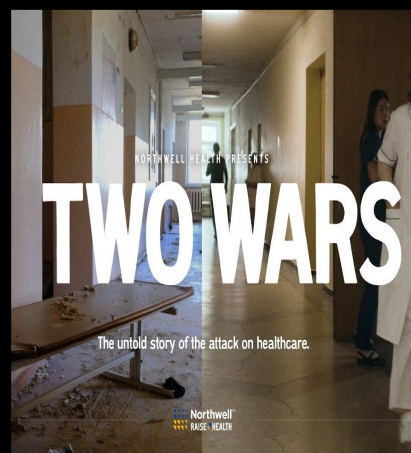
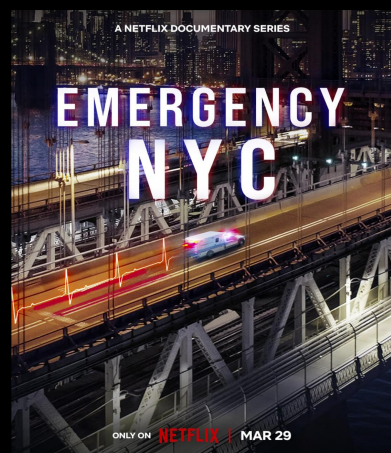


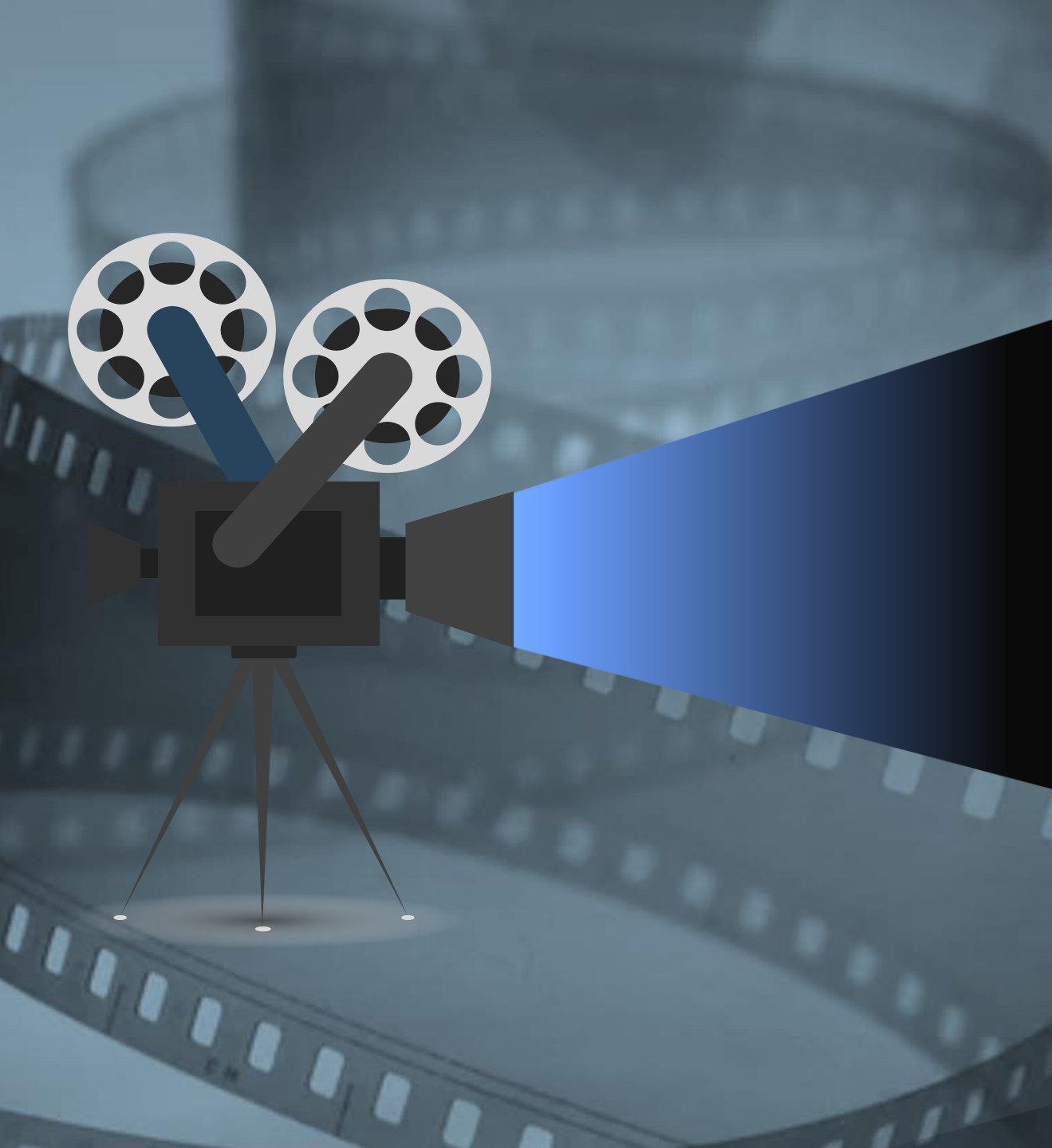
HOW STREAMING ENTERTAINMENT EXPOSES THE IMPORTANCE OF HEALTHCARE TO THE WORLD

Jill Kalman, MD

Executive Vice President
Chief Medical Officer
Deputy Physician-in-Chief
Northwell Health

Northwell Shows &
Documentaries





FOUR MONTHS, NEW YORK CITY, 2020

A FILM BY MATTHEW HEINEMAN

THE FIRST WAVE

FROM THE OSCAR®-NOMINATED DIRECTOR OF CARTEL LAND

THE FOLLOWING PREVIEW HAS BEEN APPROVED FOR
APPROPRIATE AUDIENCES
BY THE **MOTION PICTURE ASSOCIATION, INC.**

THE FILM ADVERTISED HAS BEEN RATED



www.motionpictures.org
www.filmratings.com



MPA

A GLOBAL PANDEMIC NORTHWELL AT THE EPICENTER

Scale, scope, innovative culture, and strong team members set Northwell as a leader throughout the pandemic leveraging

- Facilities
- Ambulatory network
- Clinical labs
- Information technology
- Telehealth
- Training and education





**NORTHWELL'S
RESPONSE**

79,000+

Healthcare
Heroes

350,000+

COVID+ unique
patients treated

3,000,000+

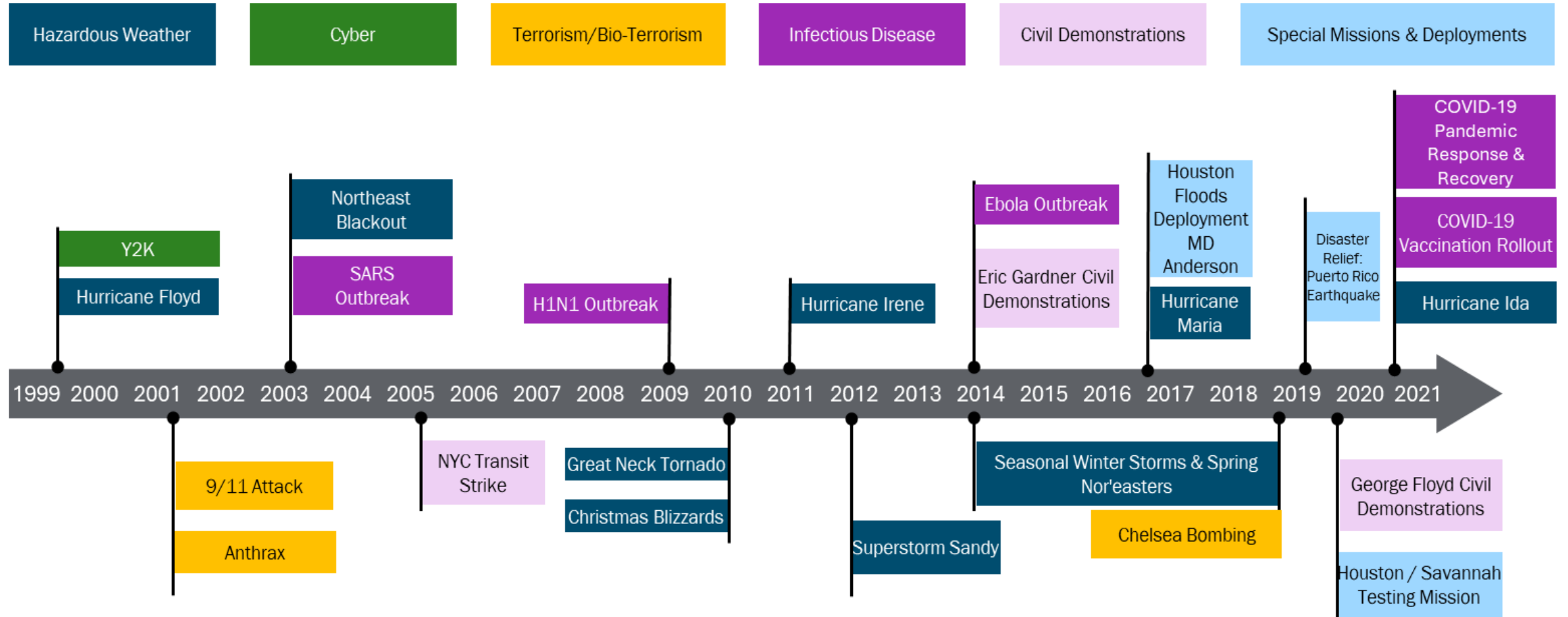
PCR tests
performed

750,000+

COVID-19 vaccines
administered



TIMELINE OF EMERGENCY EVENTS





CRISIS MANAGEMENT OPERATING MODEL



NORTHWELL LABORATORIES



Northwell has the largest health system-based laboratory network in the region performing over 34 million tests per year system-wide. The major investments in laboratory services proved beneficial during the wake of COVID-19 with over 3 million COVID PCR tests performed to date.

Lines of Business:



Hospitals



Post-Acute



Providers



Joint Ventures

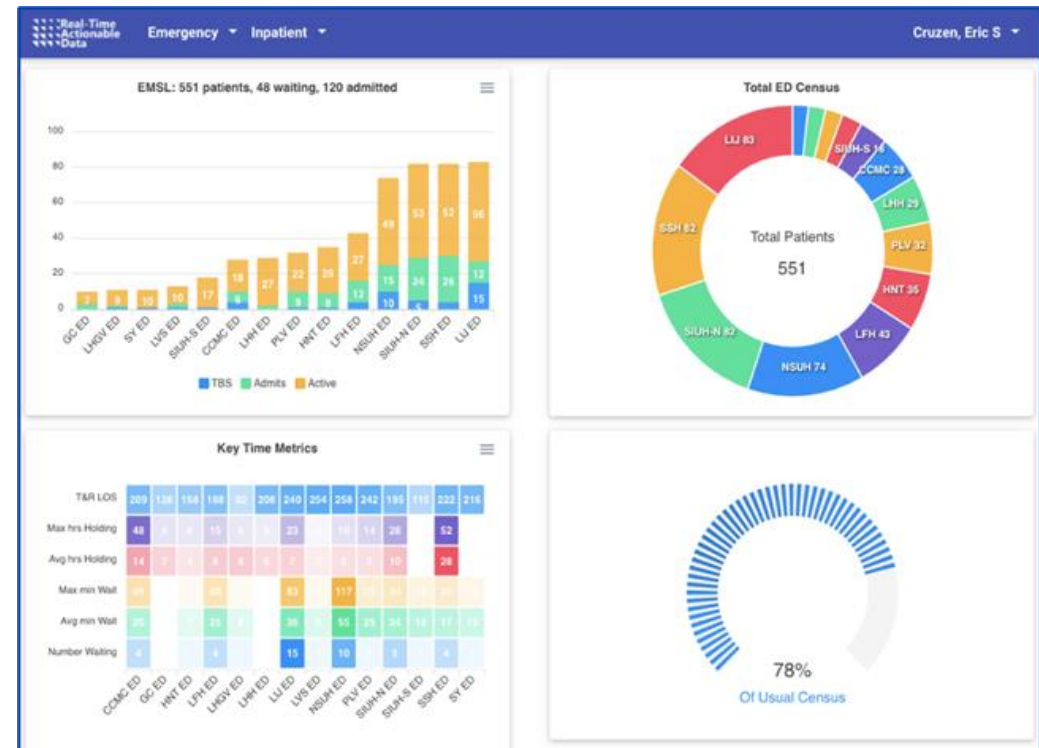
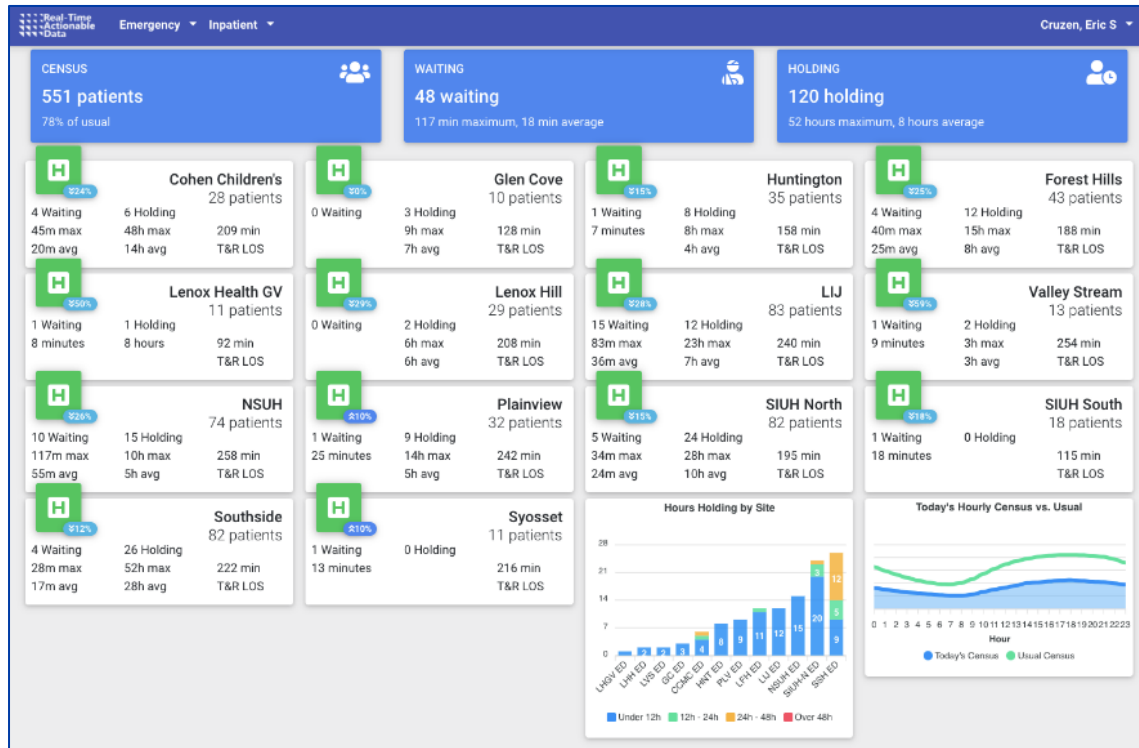


Clinical Trials

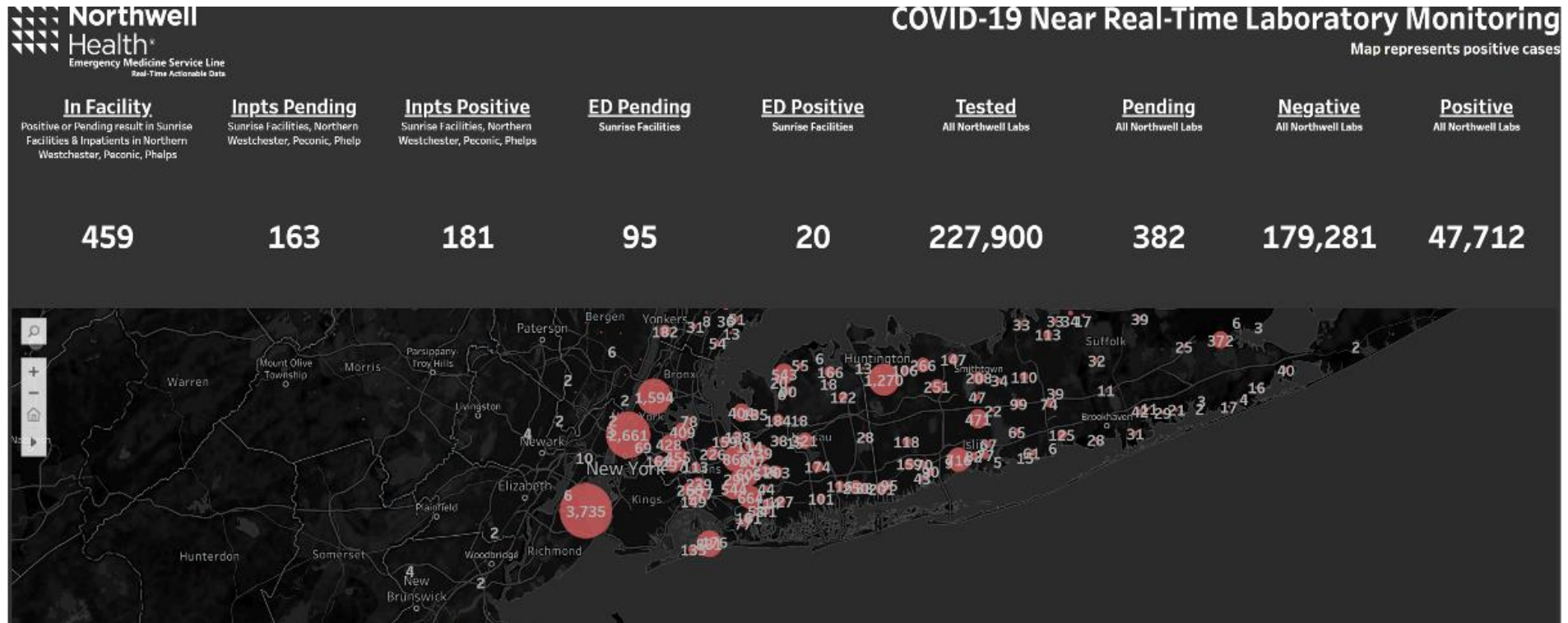
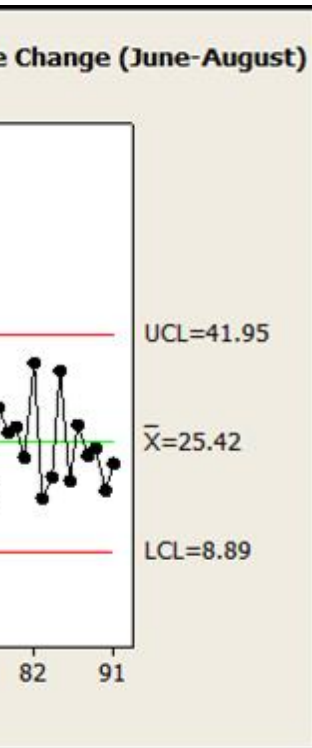


Management Services
Organization (MSO)

REAL-TIME ACTIONABLE DATA



REAL-TIME ACTIONABLE DATA



COVID-19 RESPONSE PERSONAL PROTECTIVE EQUIPMENT

While PPE became the focal point of the pandemic, the products needed for a strong COVID-19 response expanded significantly beyond the 6 standard PPE items.

- ✓ ZERO frontline workers without PPE
- ✓ Continuous monitoring of over 300 unique critical items across 52 vendors
- ✓ 90-120 days of inventory on hand

KEY PARTNERS

| | | | | |
|--------------------|-------------------|---------------------|-------------------|-------------------|
| NURSING LEADERSHIP | INFECTION CONTROL | DISTRIBUTION CENTER | CATEGORY MANAGERS | CONTRACTING TEAMS |
|--------------------|-------------------|---------------------|-------------------|-------------------|



NORTHWELL — FIRST IN NATION TO DELIVER THE VACCINE



Sandra Lindsay makes history with the first COVID-19 vaccine in the United States

Northwell Health®



Biden awards the Medal of Freedom to Sandra Lindsay, nurse who got first COVID vaccine



Northwell nurse Sandra Lindsay is first for Pfizer COVID vaccine - again

COVID-19 RESPONSE SPECIAL ASSIGNMENTS

ALTERNATE CARE SITES



- Aqueduct
- Javits Center
- Lawrence Site
- OMH Staten Island
- SUNY Westbury Center
- USNS Comfort

SWABBING STATIONS



- Fire Department (FDNY)
- Metropolitan Transport Authority (MTA)
- New York Police Department (NYPD)
- Northwell Alternative Eval, Centers
- Jones Beach
- New Rochelle
- Staten Island
- Stony Brook
- Westbury Community Center



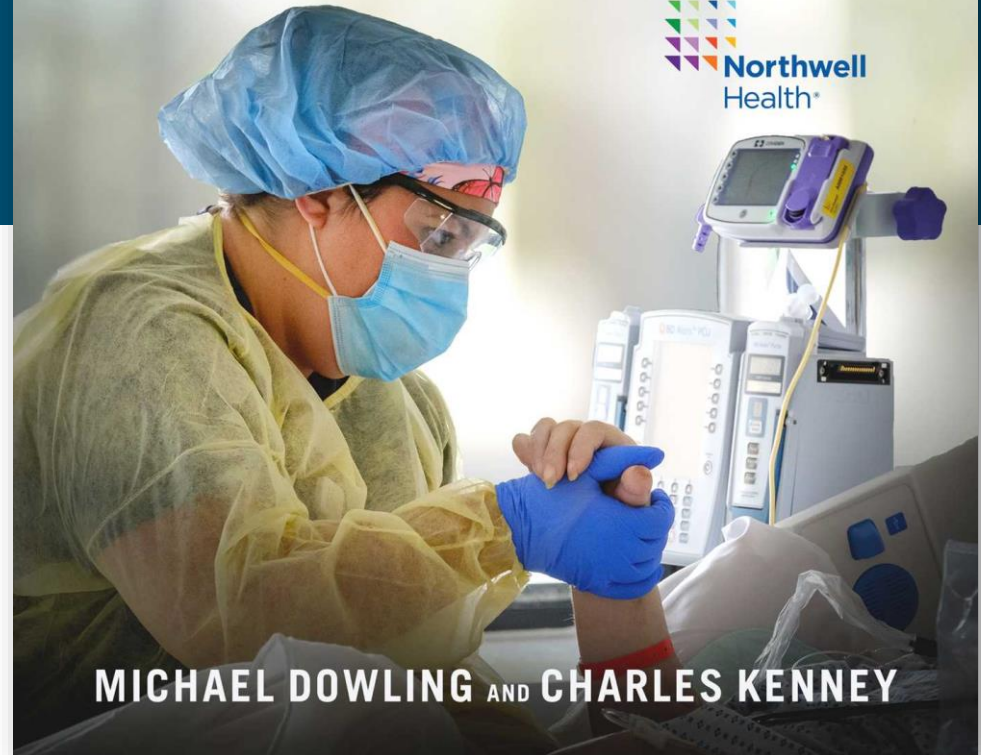
SHARING INSIGHTS

From the C-suite to the front lines, *Leading Through a Pandemic* reports on groundwork that positioned Northwell as uniquely prepared for the pandemic.

"A clarifying, must-read in these uncertain times." —GOVERNOR ANDREW CUOMO

LEADING THROUGH A PANDEMIC

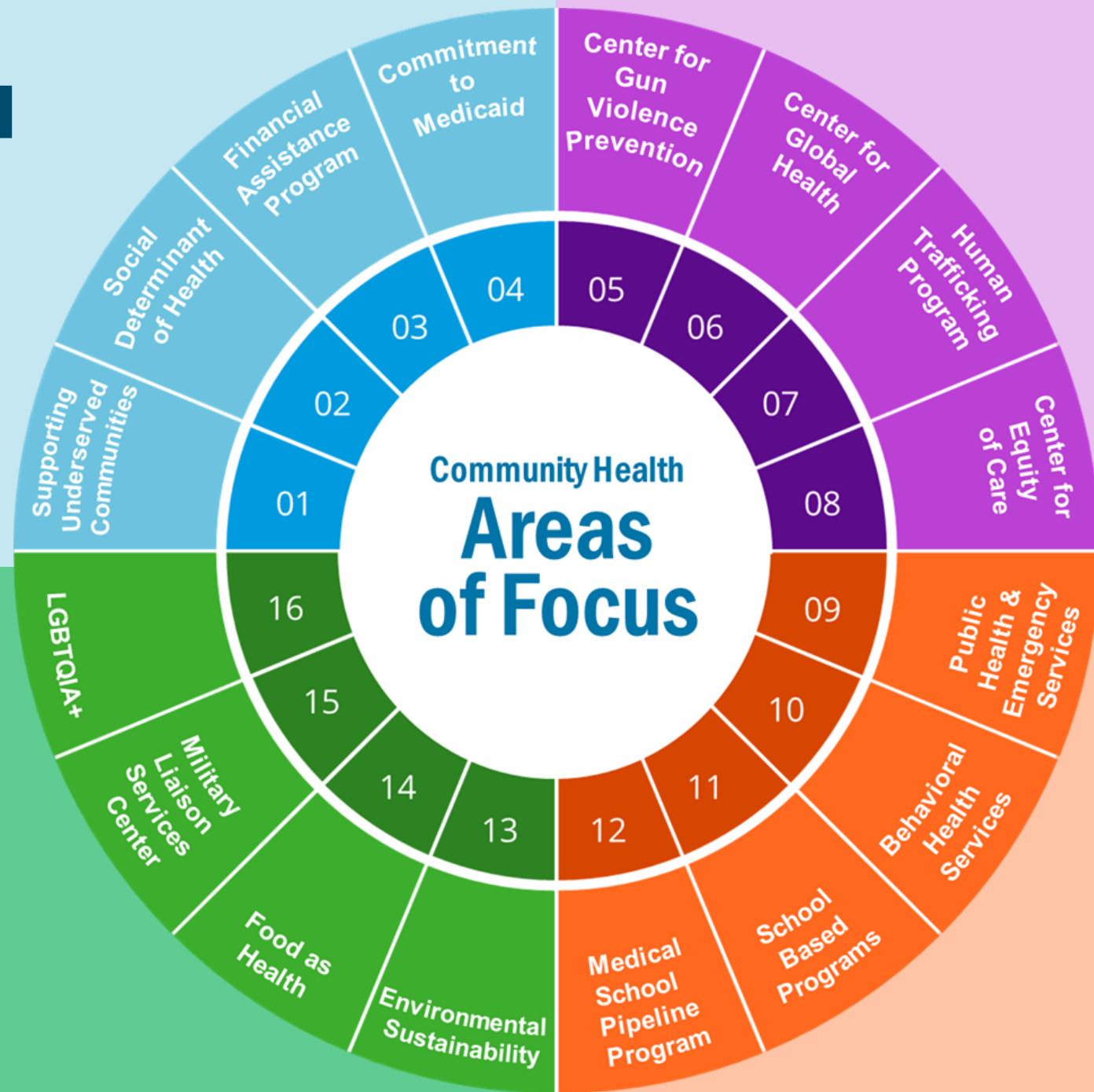
THE INSIDE STORY OF HUMANITY,
INNOVATION, AND LESSONS LEARNED
DURING THE COVID-19 CRISIS



MICHAEL DOWLING AND CHARLES KENNEY

COMMUNITY HEALTH

Northwell is nearly 90,000 people looking at health care differently. We are many things, but every day we are one thing: dedicated to the community.

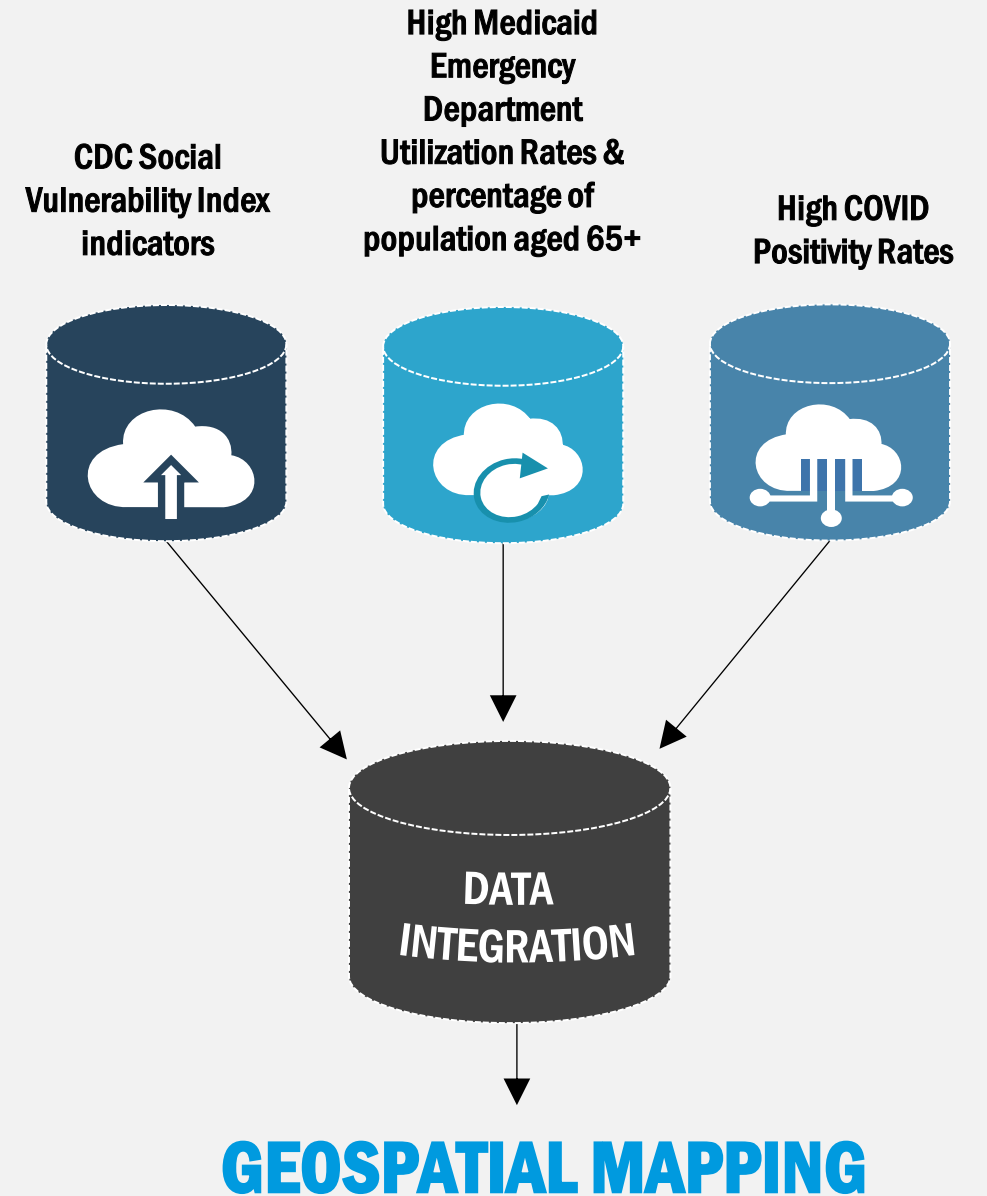
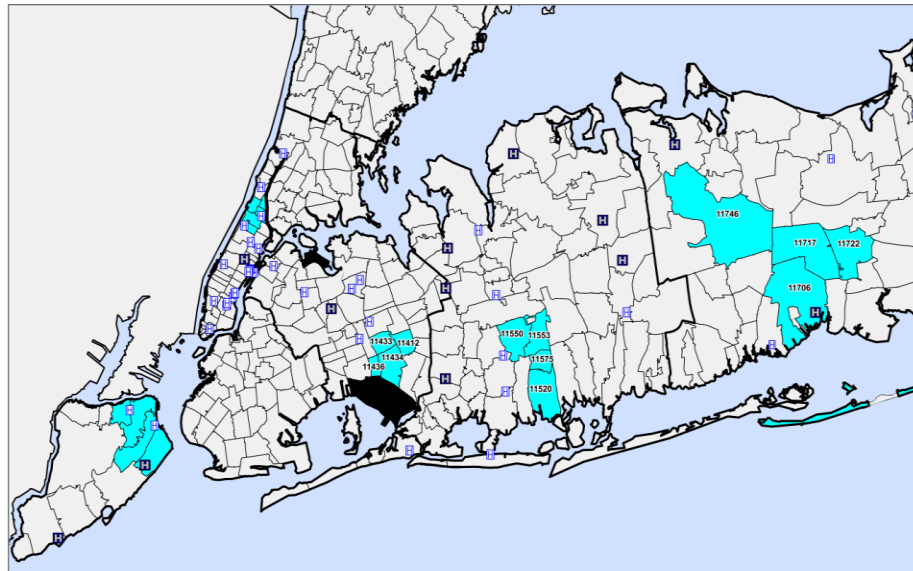


GOING UPSTREAM



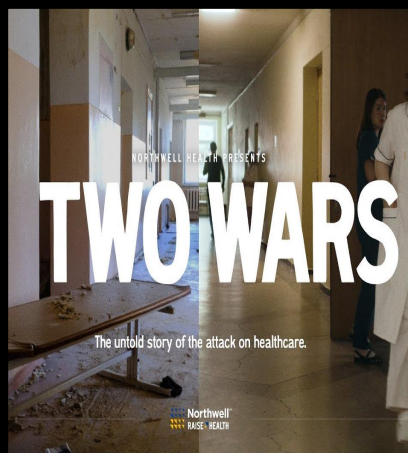
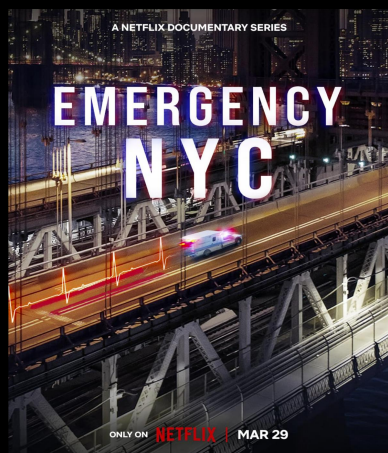
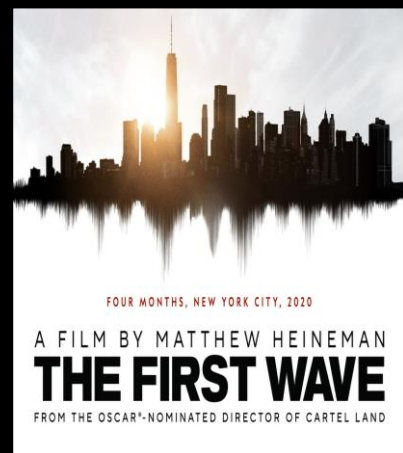
USING DATA TO PRIORITIZE COMMUNITIES

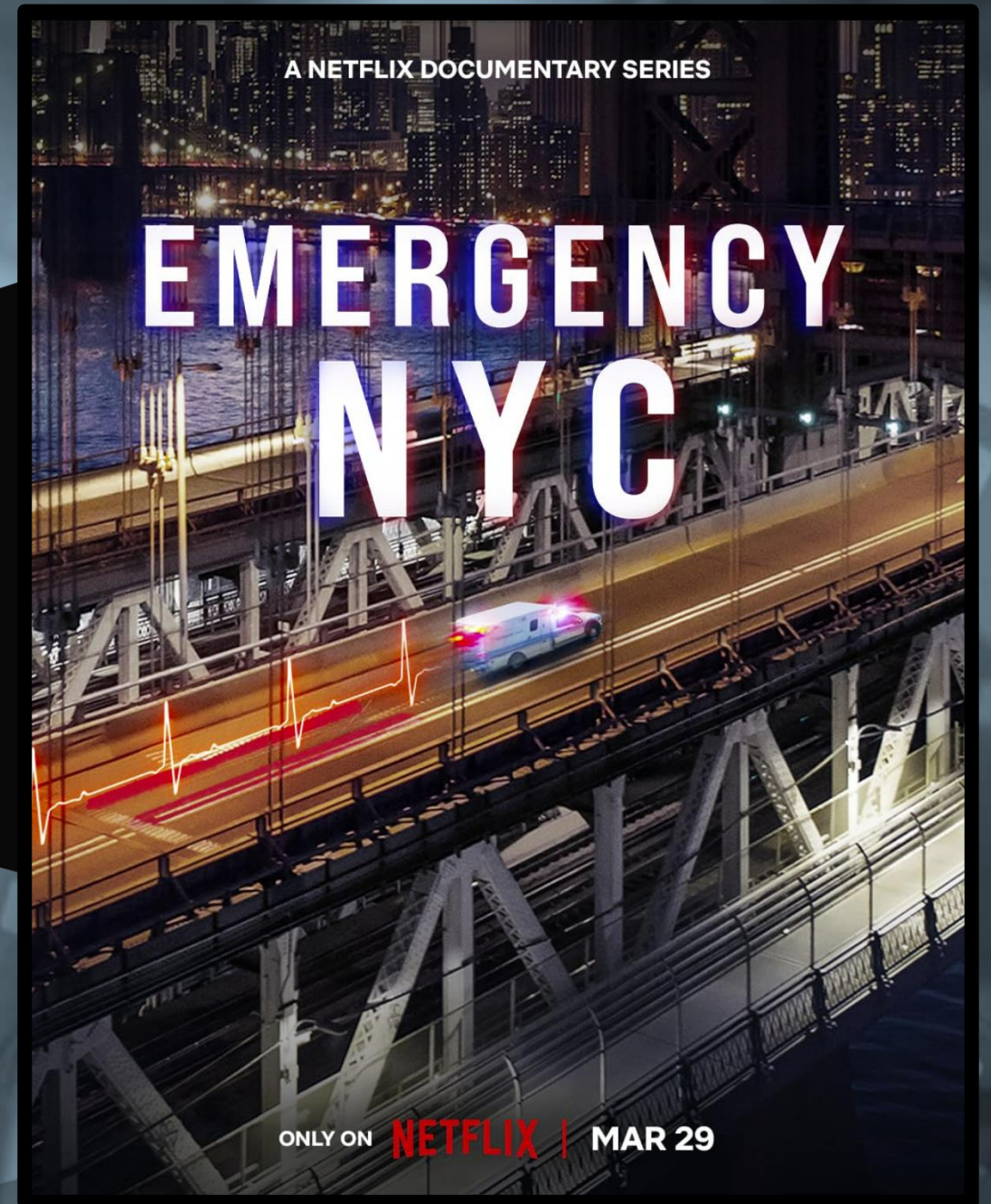
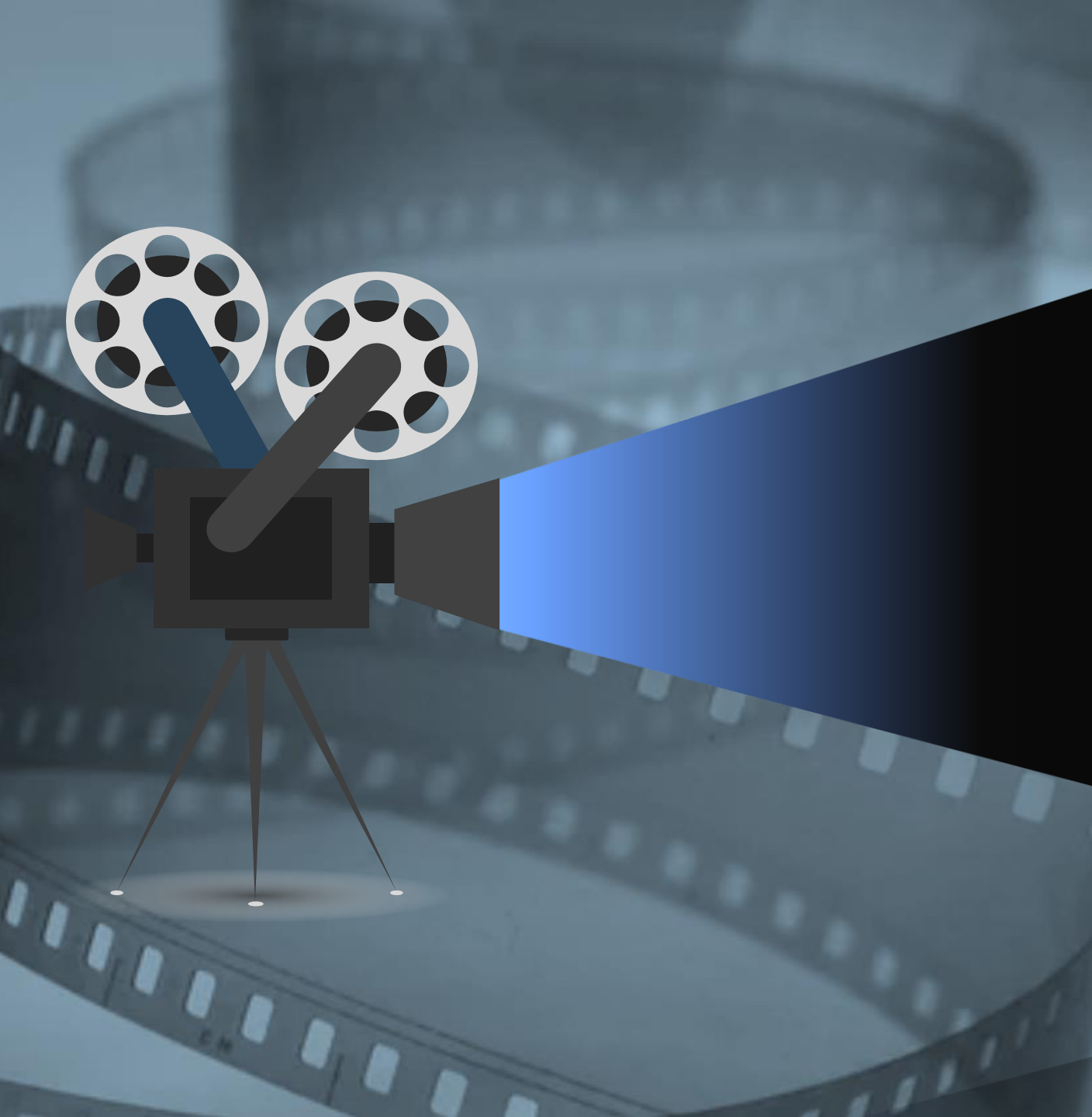
In January 2021, Northwell Health developed the Health Equity Taskforce (HET) to ensure the safe, effective, and equitable distribution of the COVID-19 vaccine to high-risk, underserved communities on Long Island, and in particular, communities of color.



Granular geospatial mapping of results helped to identify areas of greatest need.

Northwell Shows &
Documentaries





A NETFLIX DOCUMENTARY SERIES

EMERGENCY NYC

ONLY ON **NETFLIX** | MAR 29

NETFLIX



CENTER FOR EMERGENCY MEDICAL SERVICES



Northwell Health Center for Emergency Medical Services (CEMS) is the largest hospital-based ambulance service in the New York Metropolitan area and is one of the largest in the United States.

In fact, our fleet of ambulances travel enough miles to circle the globe 2.5 times each week!

CENTER FOR EMERGENCY MEDICAL SERVICES



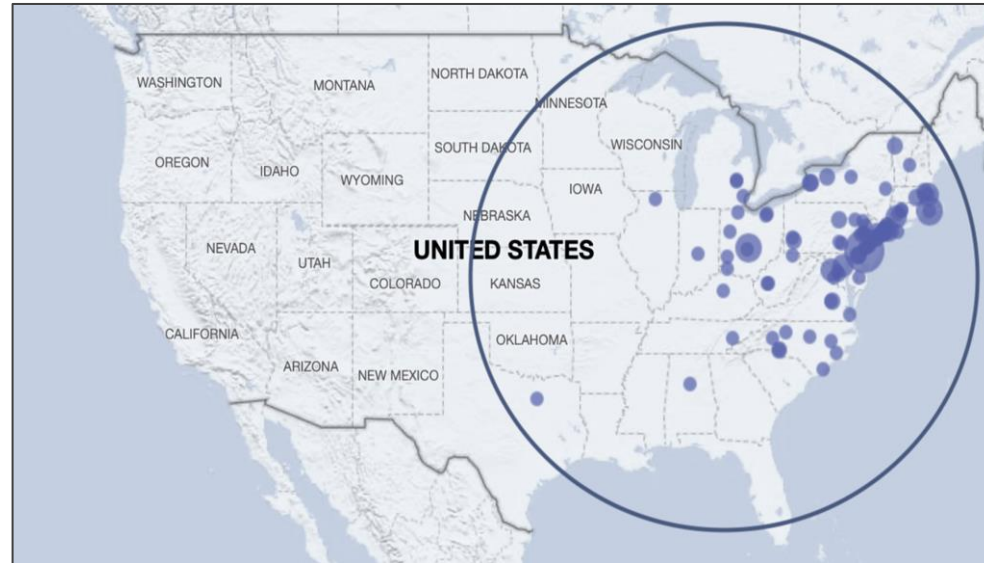
200,000+
ambulance responses

4200+
flights completed

30,000+
inter-facility transfers

SKYHEALTH AND AIR TRANSPORT

- **Team of Pilots, paramedics, critical nurses, and physicians**
- **Fixed wing jet for medical transport and transplant programs**
- **Additional fleet of helicopters, supporting the region's only rotor wing air medical program**





TER



A row of workstations with multiple monitors, keyboards, and telephones. The operators are sitting at the workstations, facing the large wall of monitors. The workstations are equipped with multiple monitors, keyboards, and telephones. The monitors display various data and maps. The telephones are mounted on the wall.

CAREpoint



LEARNING & EDUCATION



At the forefront of
transforming education



DONALD AND BARBARA
ZUCKER SCHOOL *of* MEDICINE
AT HOFSTRA/NORTHWELL



HOFSTRA NORTHWELL
SCHOOL *of* NURSING
AND
PHYSICIAN ASSISTANT STUDIES



Northwell Health[®]
Center for Learning & Innovation



EMERGENCY MEDICAL INSTITUTE

Over 1,000 emergency medical professionals trained at the Emergency Medical Institute annually

The Emergency Medical Institute (EMI) operates under Northwell Health's Center for Learning and Innovation (CLI), the nation's largest Corporate University in health care. The Emergency Medical Institute is New York's premier destination for emergency medical education. Students learn in small, intimate, and comfortable Skills Lab settings with the most modern equipment available. Paramedic students can conduct actual advanced life support maneuvers inside CLI's Bioskills Center. Students have access to Northwell's own 9-1-1 and Core Ambulance Operations creating a positive and more interactive learning experience.





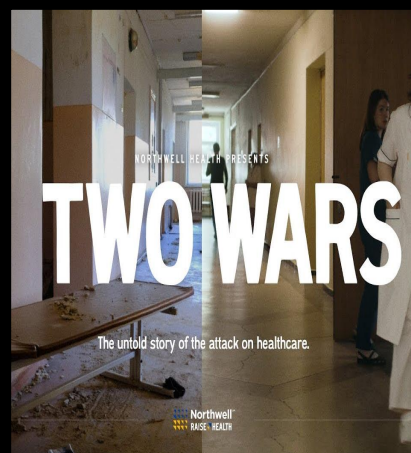
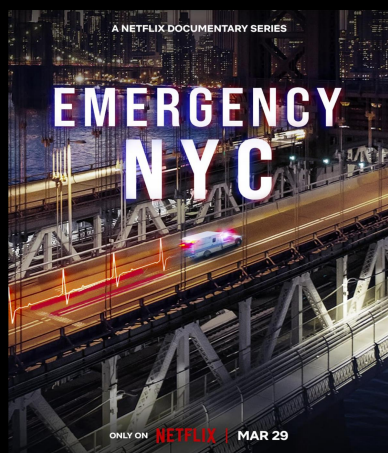
CENTER FOR GUN VIOLENCE PREVENTION

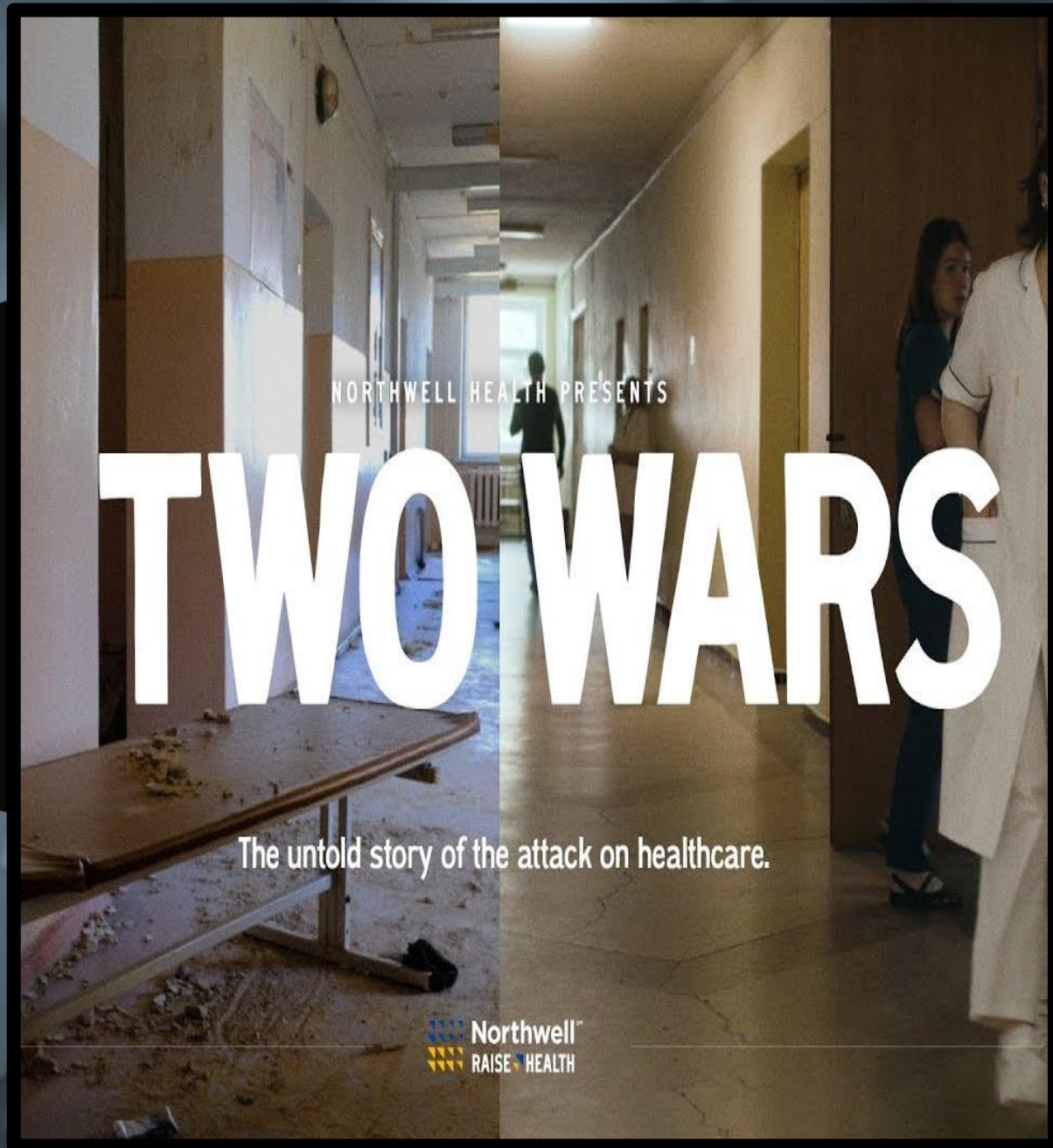
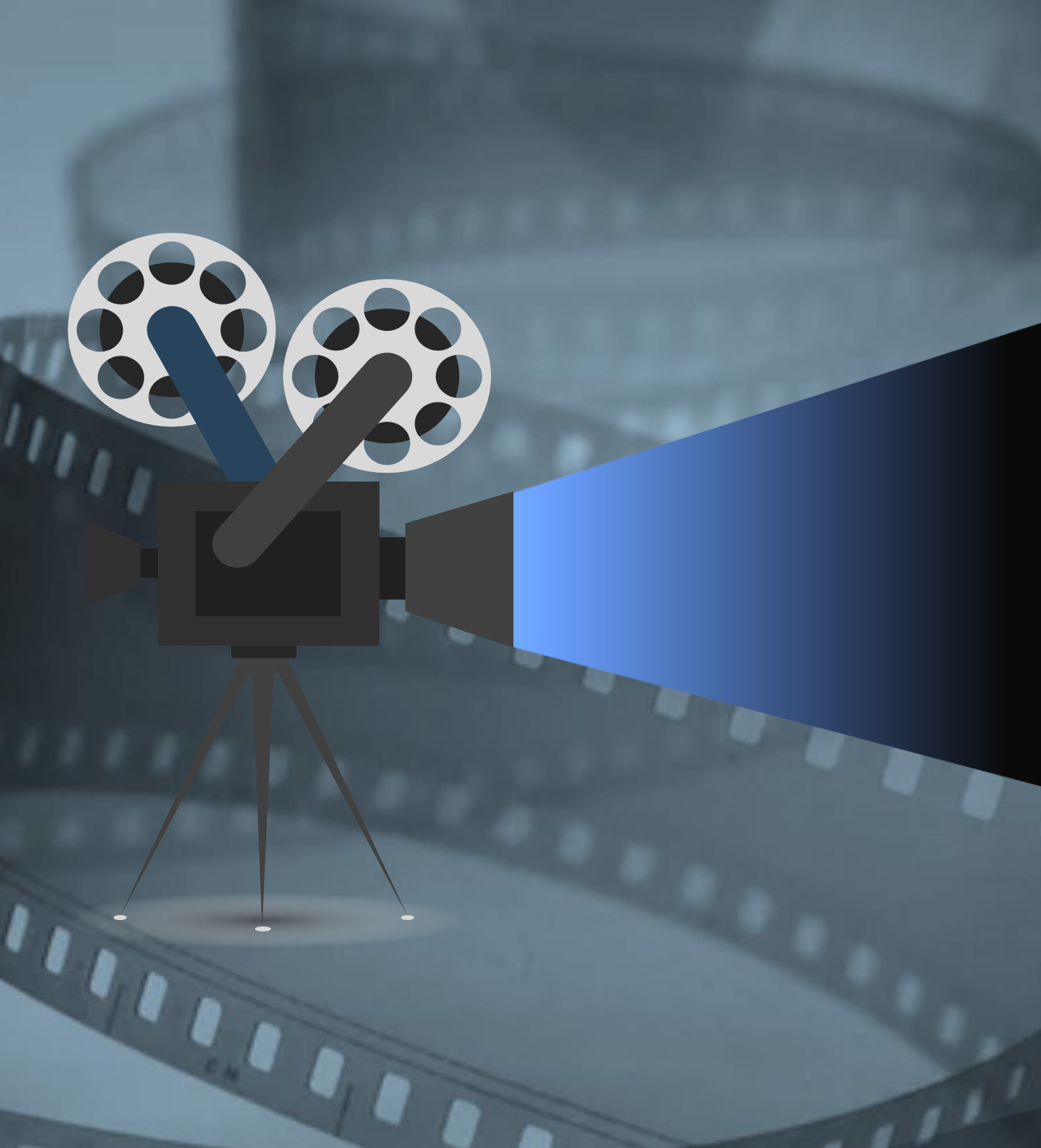


**THE GUN VIOLENCE
PREVENTION FORUM**

NorthwellSM

Northwell Shows &
Documentaries





NORTHWELL HEALTH PRESENTS

TWO WARS

The untold story of the attack on healthcare.

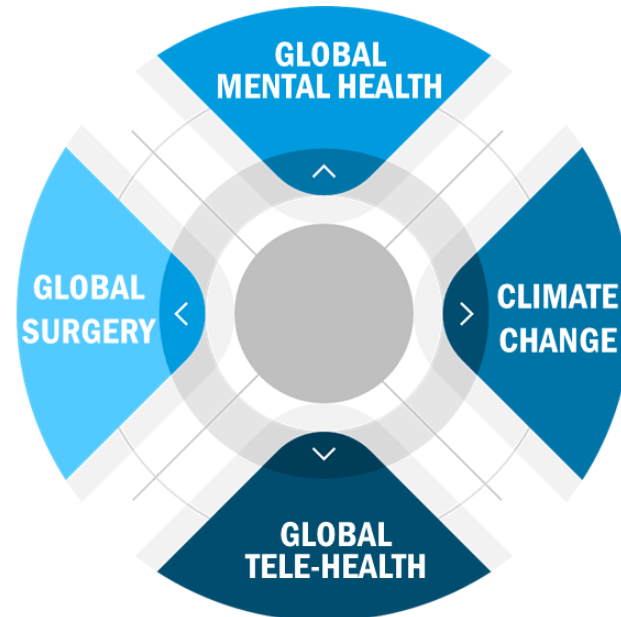
 Northwell™
RAISE HEALTH



THE MISSION

When it comes to global health, there is no “them” ... only us.
Global Health Council

The Center for Global Health develops diverse, world-class global health initiatives, preparing leaders of tomorrow for a changing health care landscape today.



CORE SITES

GUYANA

ECUADOR

INDIA

UKRAINE



CGH partners with governmental entities to enact longitudinal and impactful partner-led efforts.

Top 10 countries of Birth for Foreign-Born New York City Residents in 2020

| | Country of Birth for NYC Immigrants | Population in 2020 | % of all Foreign-born | Population in 2010 | % Change |
|----|-------------------------------------|--------------------|-----------------------|--------------------|----------|
| 1 | Dominican Republic | 421,920 | 14.0 | 375,397 | 12.4 |
| 2 | China | 320,900 | 10.6 | 299,047 | 7.3 |
| 3 | Jamaica | 165,260 | 5.5 | 168,798 | -2.1 |
| 4 | Guyana | 136,180 | 4.5 | 137,105 | -0.7 |
| 5 | Mexico | 134,350 | 4.5 | 186,081 | -27.8 |
| 6 | Ecuador | 126,800 | 4.2 | 137,604 | -7.8 |
| 7 | Bangladesh | 91,980 | 3.1 | 56,454 | 62.9 |
| 8 | Trinidad and Tobago | 84,680 | 2.8 | 83,673 | 1.2 |
| 9 | Haiti | 78,250 | 2.6 | 94,686 | -17.4 |
| 10 | India | 77,530 | 2.6 | 72,185 | 7.4 |

Based on the 2020 and 2010 1-Year American Community Survey Public Use Microdata Sample (ACS PUMS).

GLOBAL CONTEXT SUPPORT IN UKRAINE



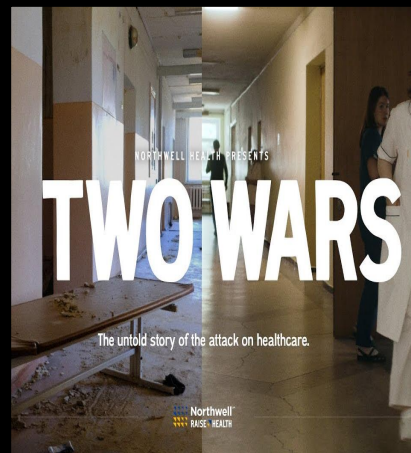
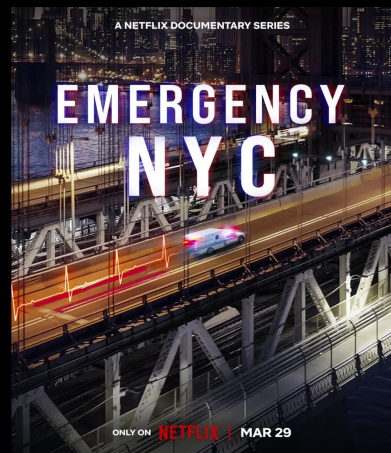
- Provided 28+ pallets, holding 18,000 pounds of life-saving medical supplies
- Offer telemedicine, mental health, and clinical screenings to assist Ukraine's frontline medical providers
- Provide medical treatment and rehabilitation for wounded Ukrainian soldiers who have suffered severe upper and lower extremity injuries and undergone amputations. Full-service program located at Staten Island University Hospital.

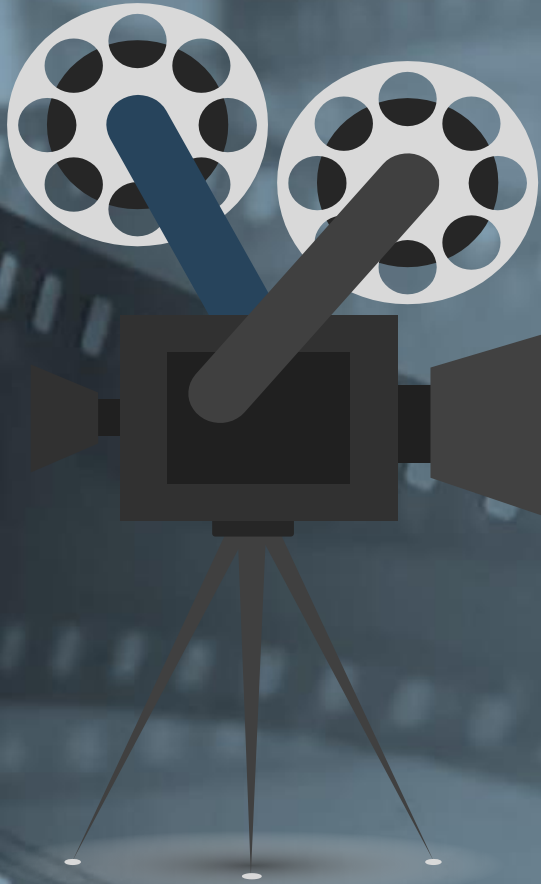
Volodymyr Zelensky visits wounded Ukrainian soldiers at New York City hospital saying 'thank you for your service' - before branding Russian UN delegation 'terrorists': 'Stay strong'

- President Zelensky visited wounded Ukrainian soldiers in New York City Monday
- He met soldiers at the Staten Island University Hospital and handed them medals
- After his time in New York, he will travel to DC to meet with President Joe Biden



Northwell Shows &
Documentaries





HBO ORIGINAL

ONE SOUTH

PORTRAIT OF A PSYCH UNIT

JUNE 25 AND 26

max

HBO[®]
ORIGINAL

THE STATE OF BEHAVIORAL HEALTH IN THE UNITED STATES



50 million

U.S. adults are experiencing a mental illness

55%

U.S. adults received no treatment for mental illness



1 in 5

U.S. children have a mental, emotional, or behavioral disorder



15%

of adults had a substance use disorder in the past year

93.5%

did not receive treatment

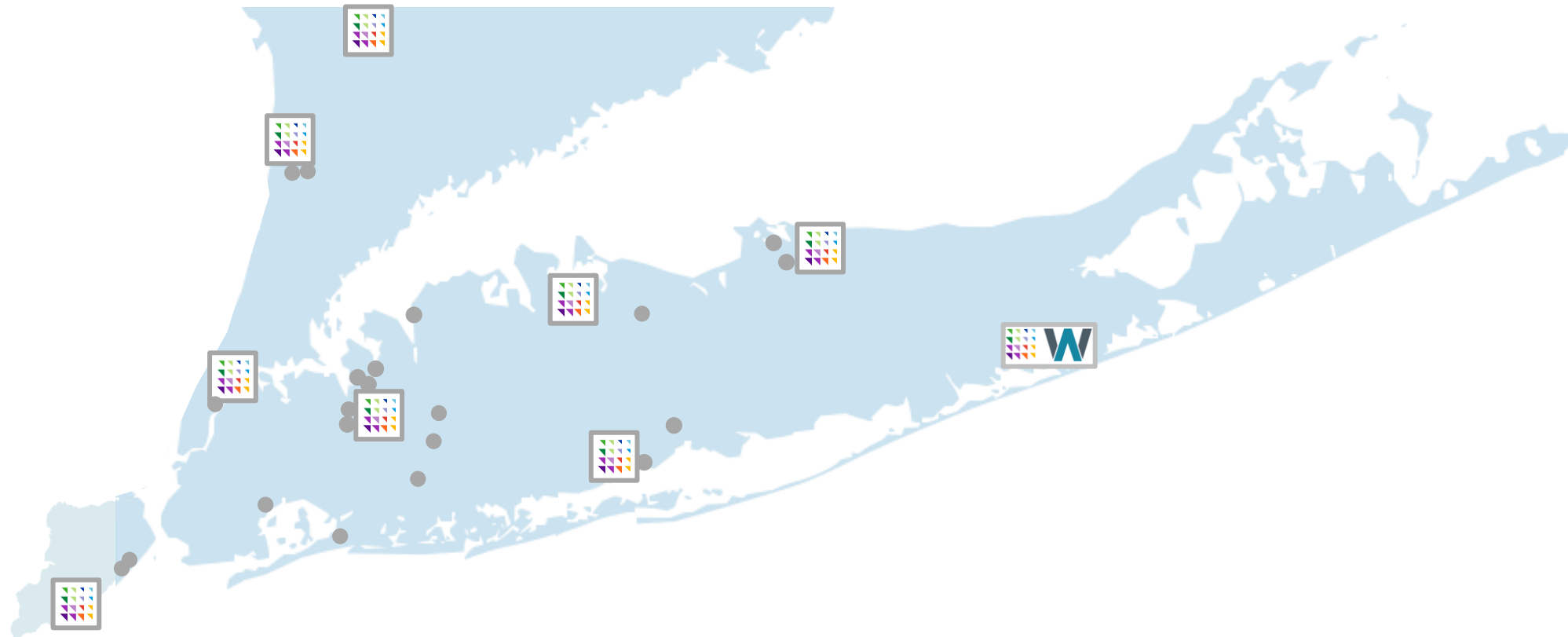
60% of youth with major depression receive no mental health treatment



18.8% of adolescents seriously considered attempting suicide in the last year



INPATIENT AND OUTPATIENT BEHAVIORAL HEALTH LOCATIONS

With 533 inpatient beds and additional outpatient programs, Northwell Health is the second largest provider of mental health services in New York State



-  Current location for inpatient care
-  Current outpatient/urgent location

OVERVIEW OF ZUCKER HILLSIDE HOSPITAL



FOUNDING

Mission of Hillside Hospital founded to support stress of resettlement for Jewish immigrants to New York.

EXPANSION

Barbara and Donald Zucker support a vision to include outpatient care and additional inpatient units.

REPUTATION

Nationally recognized for the pioneering of high school, university, perinatal, and other trailblazing teaching and research.

PROGRAMS

Inpatient adolescent, adult, geriatric, and women (perinatal) units with numerous outpatient and community programs.

**LOOKING FORWARD
PEDIATRIC
BEHAVIORAL
HEALTH
PAVILLION**

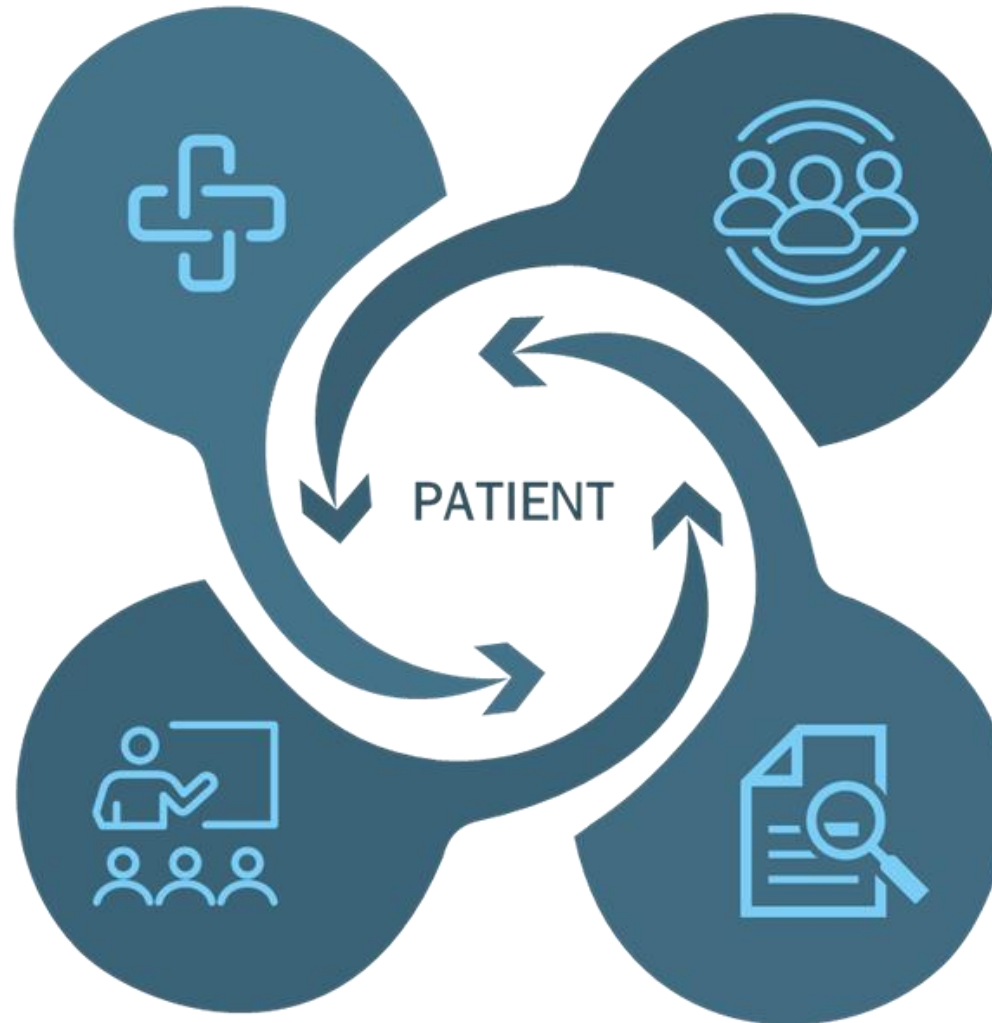


NORTHWELL VISION

A HOLISTIC APPROACH TO ADDRESSING THE BEHAVIORAL HEALTH CRISIS

CLINICAL CARE

Expand access to care in inpatient, outpatient, and virtual settings



COMMUNITY PARTNERSHIPS

Establish collaborations to enhance access to services and resources and “meet people where they are”

EDUCATION

Train the future generation of clinicians

RESEARCH

Discover new and better diagnostic methods, treatments and care models

NORTHWELL COLLEGE CONNECT

A COMPREHENSIVE PROGRAM DESIGNED TO MEET
THE UNIQUE NEEDS OF COLLEGE STUDENTS

660K+

Covered
Students

11K+

Outpatient
Visits per year

96

Partner
Schools

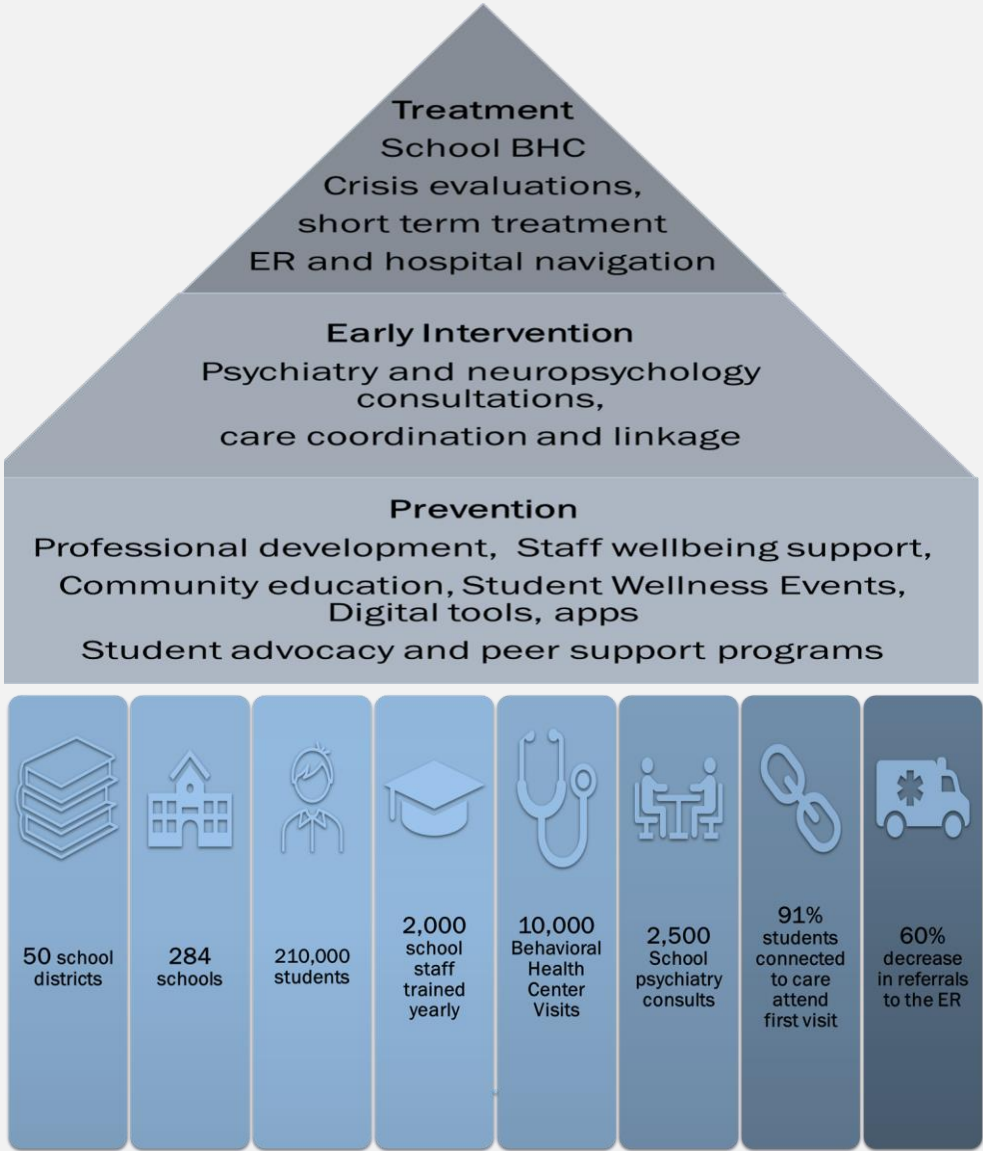
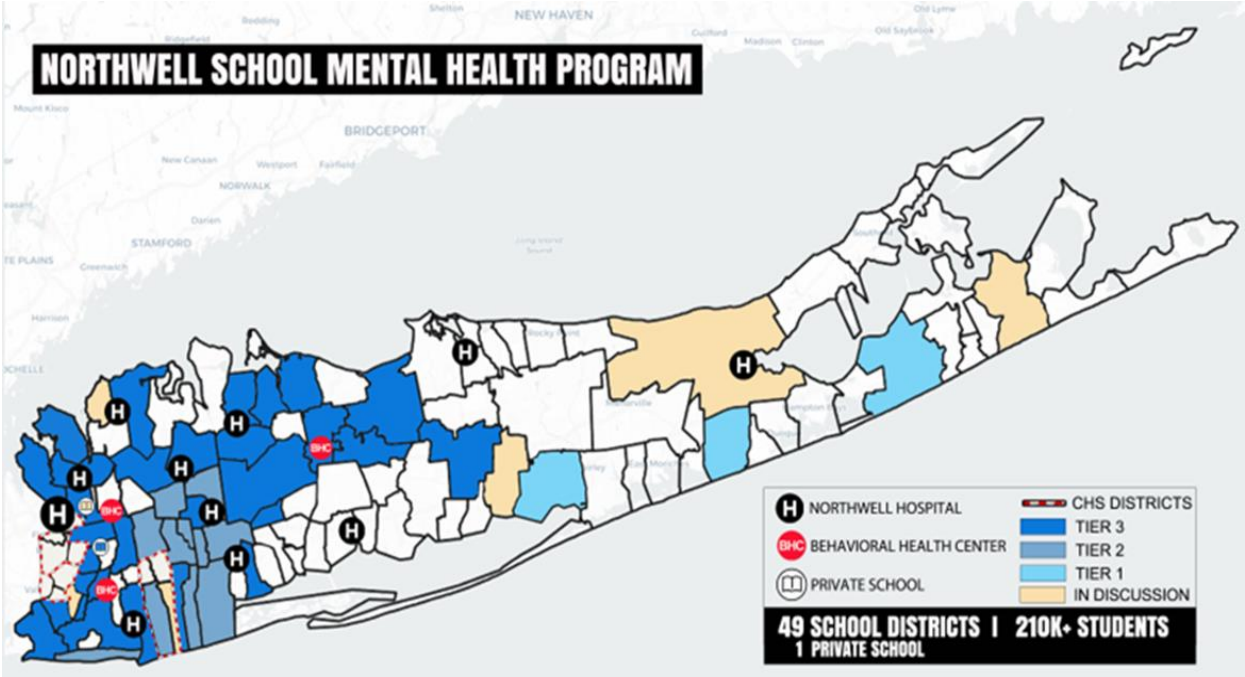
3

Specialized
Inpatient
Units

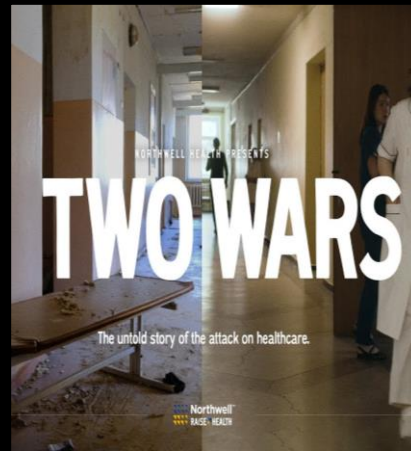
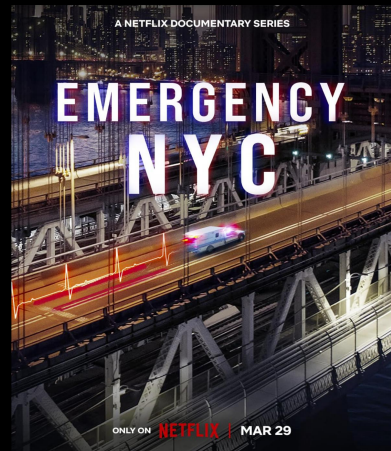
Our Mission

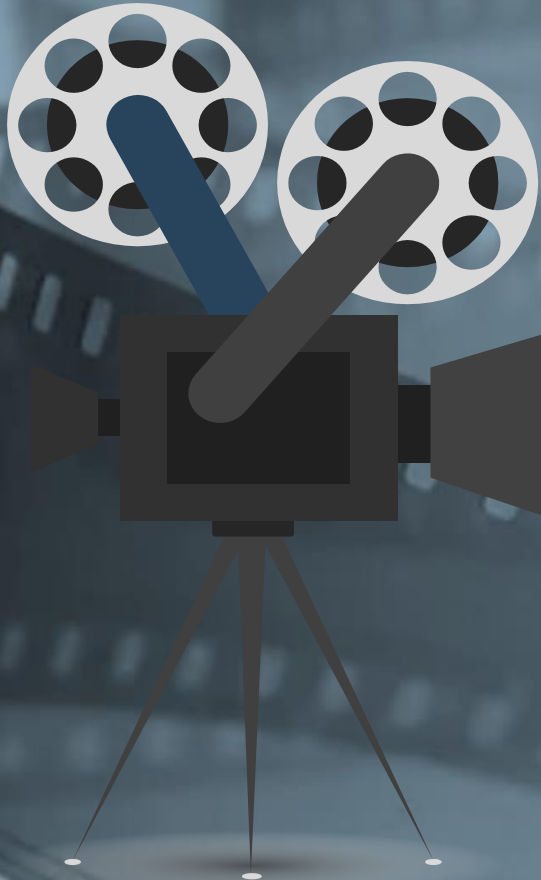
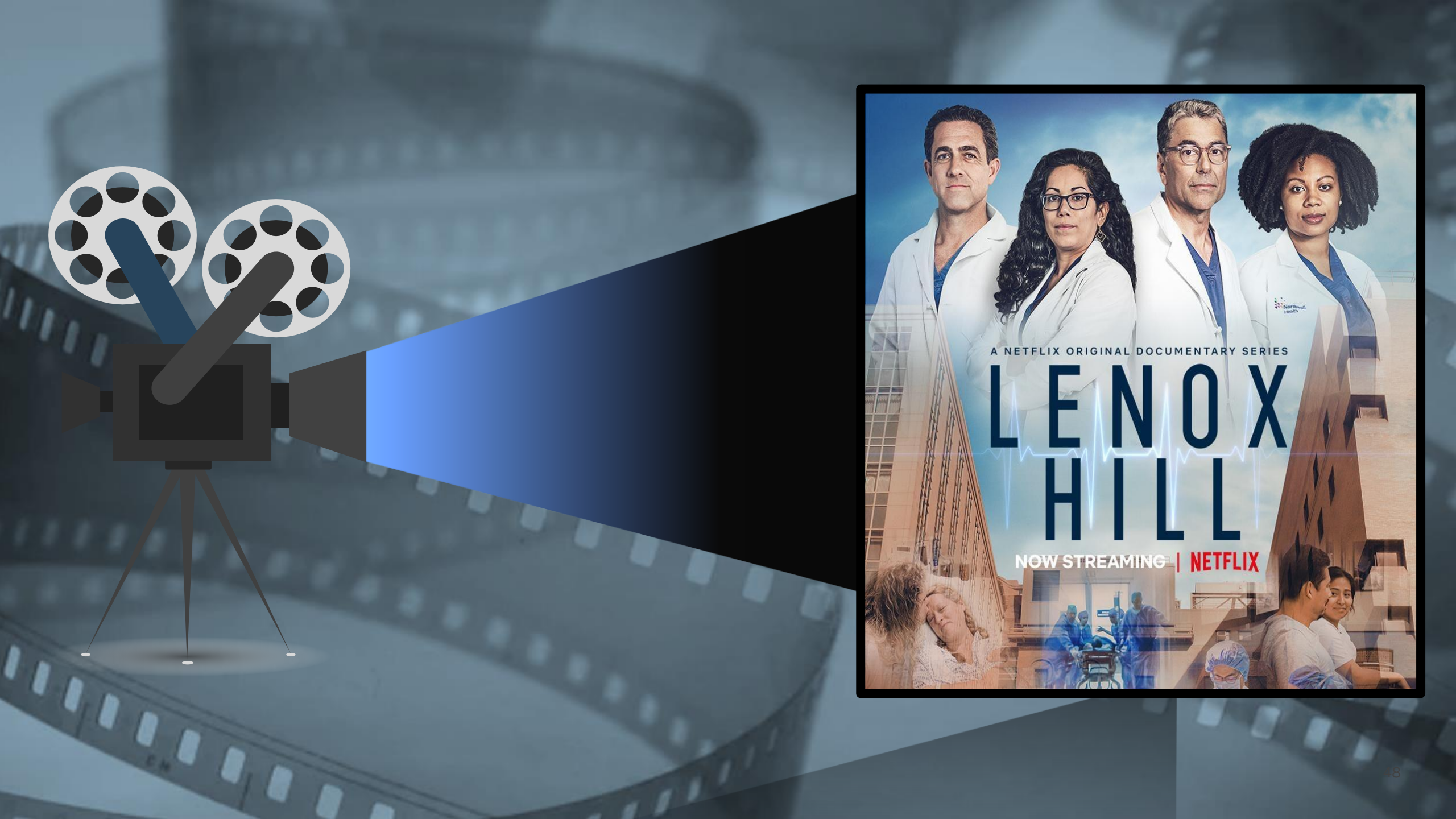
To help college students affected by mental illness access evidence-based behavioral health services to achieve success in academic performance and interpersonal relationships; and lead optimally productive lives.

NORTHWELL HEALTH MENTAL HEALTH PARTNERSHIPS



Northwell Shows &
Documentaries





A NETFLIX ORIGINAL DOCUMENTARY SERIES

LENOX HILL

NOW STREAMING | NETFLIX

The poster features four main cast members in white lab coats at the top. Below them, the title 'LENOX HILL' is written in large, bold, blue letters with a white heartbeat line running through it. At the bottom, there are smaller images showing a patient in a hospital bed, medical staff in scrubs, and a person in a surgical cap. The background of the poster is a large, multi-story brick hospital building.



NETFLIX

OUR MOST VALUABLE ASSET



**LOOKING FORWARD
LENOX HILL
REDEVELOPMENT**







OPEN DISCUSSION